

IMI Education and Training Projects

IMI EMTRAIN (www.emtrain.eu)

The European Medicines Research Training Network (EMTRAIN) is establishing a sustainable, pan-European platform for education and training, covering the whole life-cycle of medicines research, from basic science and pre-clinical development through clinical development to marketed products, including pharmacovigilance. This is achieved by making use of and integrating the strengths and competencies of all the IMI Education and Training Partners. EMTRAIN is in addition building a quality focussed framework for integration of European PhD programmes run in public-private partnerships.

IMI Eu2P (www.eu2p.org)

The European Programme in Pharmacovigilance and Pharmacoepidemiology (Eu2P) addresses training needs, for both life science specialists and non specialists. It is developed by a unique faculty of highly qualified professionals in these disciplines, who have combined experienced from academia, industry and regulatory agencies. The curriculum offers a range of qualification levels (certificate, master and PhD) and allows part or full time study by those in employment as well as graduate students. Eu2P aims at providing a high level of course flexibility and use of innovative and interactive e-learning tools. First courses in autumn 2011.

IMI PharmaTrain (www.pharmatrain.eu)

The Pharmaceutical Medicines Training Programme (PharmaTrain) aims at fostering the overall understanding and competence for successful execution of integrated drug development and life-cycle management of medicines through innovative training methods and Europe-wide agreed programme content. It identifies needs and implements new education and training programmes in the field, including related areas like regulatory sciences and clinical trial practices. First courses in autumn 2010.

IMI SafeSciMET (www.safescimet.eu)

European Modular Education and Training Programme in Safety Sciences for Medicines (SafeSciMET) develops and delivers a pan-European education and training programme on drug safety that emphasises integrative and translational aspects, from pre-clinical phases to clinical ones, lacking largely in today's educational programmes. By this, it contributes to a new "breed" of drug safety scientists, also embracing new technologies to enhance innovative approaches to drug discovery and development. SafeSciMET's first course on Drug Discovery and Development was held in November 2010 at the University of Copenhagen, Denmark – the additional nineteen courses of the first cycle is spread over 2011-2012.

IMI Continuing Professional Development

IMI Education and Training Projects address Continuing Professional Development (CPD) for professionals in medicines research and development. It is not different from CPD in general, by which members of professional associations maintain, improve and broaden their knowledge and skills required in their professional lives. It is a conscious updating of professional knowledge and the improvement of professional competence throughout an individual's working life, building on a commitment to being professional, keeping up to date and continuously seeking to improve. It is the key to optimising career opportunities, both today and for the future.

IMI Education and Training Portal

For more information about any of the projects, see their websites above and/or contact the project leadership as advised on the websites. Alternatively, access the IMI Website (www.imi.europa.eu), where all IMI Education and Training projects are listed.



www.imi.europa.eu

IMI EDUCATION AND TRAINING PROGRAMMES

IMI BACKGROUND

The Innovative Medicines Initiative (IMI) is a unique and large-scale public-private partnership between the European Union and the European Federation of Pharmaceutical Industries and Associations (EFPIA). It is the first Joint Undertaking where the European pharmaceutical industries collectively collaborate with European universities in both research, and education and training.

IMI runs a € 2 billion research programme aiming to speed up the discovery and development of safer and more effective drugs for patients, and to reinvigorate the biopharmaceutical sector in Europe.

IMI receives € 1 billion funding from the European Commission's Seventh Framework programme. The EFPIA member companies match this amount with at least equal in-kind contributions (consisting of research-related activities and resources).

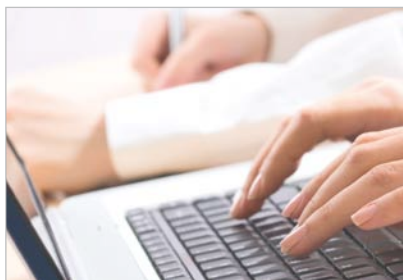
European leadership in innovative biomedical research requires highly skilled, experienced researchers in many different disciplines. The new IMI education and training funding scheme is aiming at substantially improving expertise on biomedical science, tools and technologies (such as biomarkers, imaging techniques, knowledge management platforms ...). This will enable faster and more efficient development of safer and effective drugs for patients.

The research consortia participating in IMI projects include small- and medium-sized enterprises, universities and other research organisations, hospitals, patient organisations, public authorities and large pharmaceutical companies.

IMI supports projects in the following pre-competitive areas:

- Predicting safety
- Predicting efficacy
- Knowledge management
- **Education and training**

Based on these 4 needs or pillars, a European Strategic Research Agenda was developed under the lead of industry involving all relevant stakeholder groups, i.e. academia; biopharmaceutical companies and small and medium-sized enterprises (SMEs); healthcare providers and clinical centres; regulators, learned societies, and patients' organisations.



IMI Education and Training

To date, four IMI Education and Training Programmes have been initiated to provide excellence in education and training. The overall objectives are:

- To assess existing and emerging (industrial, regulatory and academic) education and training needs, and to contribute to fulfilling them by harmonisation, organisation and production of new training programmes at certificate, diploma, master, and PhD levels. The programmes are supposed to be easily accessible to students from all over Europe and to allow great learning flexibility. For this, current and/or new accreditation and certification criteria are important to be agreed for mutual recognition across academic institutions within the EU.
- To address unmet needs in Continuing Professional Development (CPD) for professionals in medicines research and development employment. In addition to developing new courses the diverse range of available courses and existing e-learning tools and methodologies will be built into an IMI online education and training course catalogue and portal. Development of guiding criteria for CPD course quality assessment will be required to ensure acceptance and adoption by all quality stakeholders.

IMI for Europe and Its Citizens

The IMI Joint Undertaking is aiming to make Europe more attractive for biopharmaceutical research and development investments and boost the competitiveness of European life sciences. By directly addressing prevailing challenges, IMI has the potential to:

- Modernise the research and development of medicines
- Expand European expertise and skills in new technologies
- Anchor research and development jobs in Europe and reverse brain drain
- Enhance Europe's economy by strengthening the competitive position of smaller companies, enabling them to collaborate with a multitude of stakeholders
- Craft a pan-European road map for collaboration between the industrial sector and academia at the highest possible level
- Faster provide better and safe medicines in the interest of the European citizens

IMI Education and Training Partnership

Currently 85 partners are collaborating in the IMI Education and Training projects:

- 19 Industry (EFPIA) Partners
- 55 Public Partners
- 4 Regulatory Partners
- and 7 Learned Society Partners